

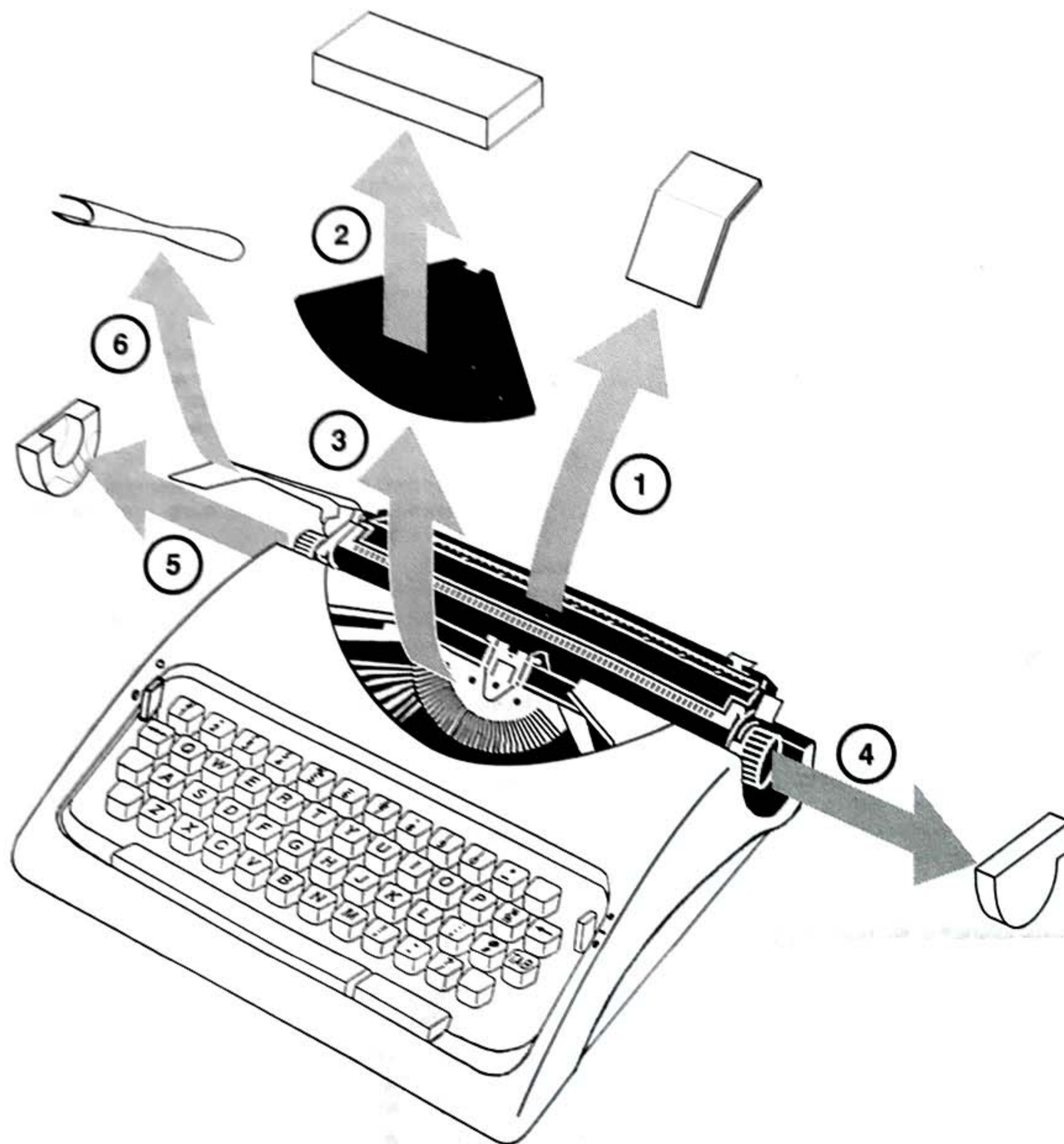
SILVER REED

SR 280 DE LUXE

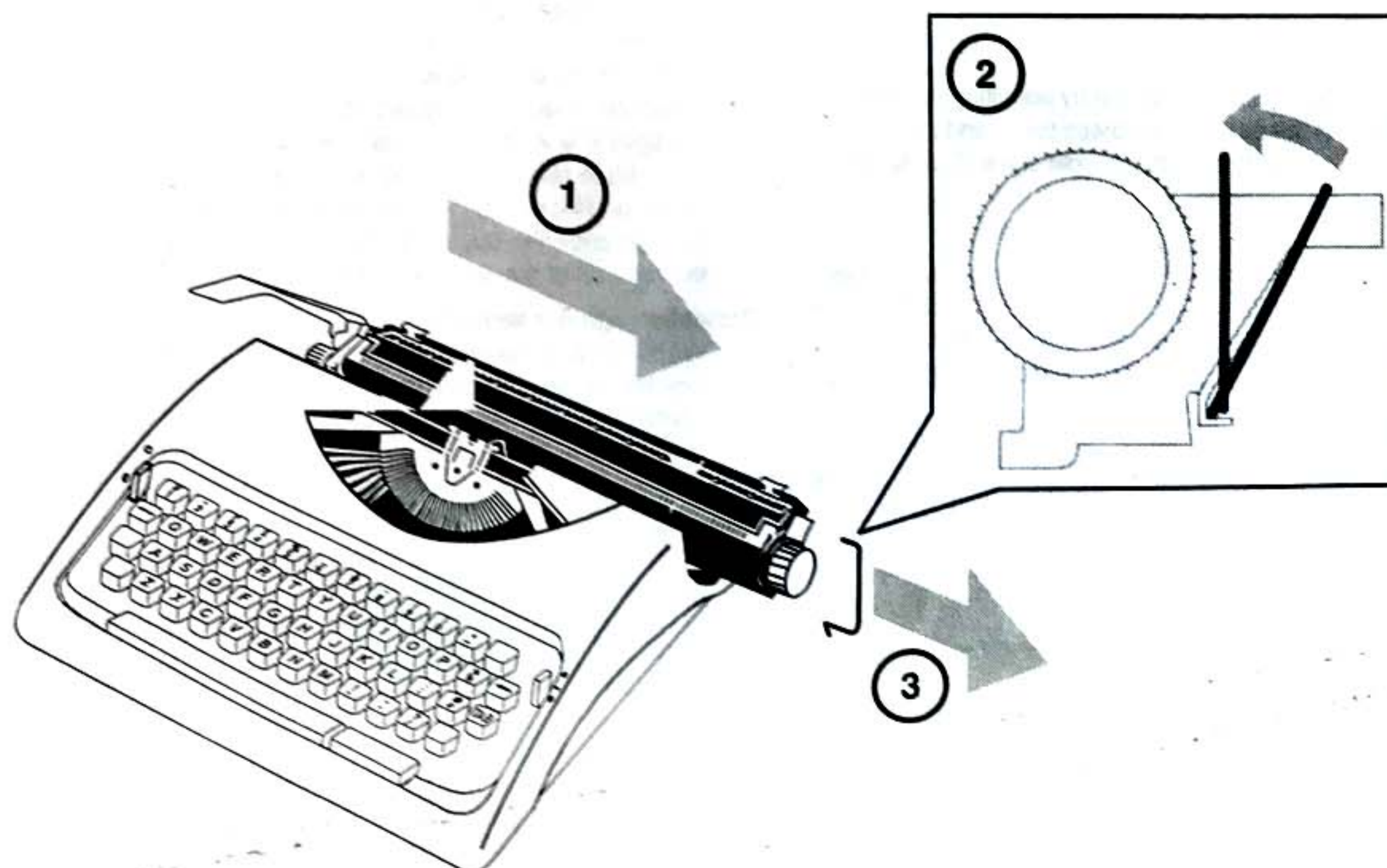
Operating instructions

Operating instructions

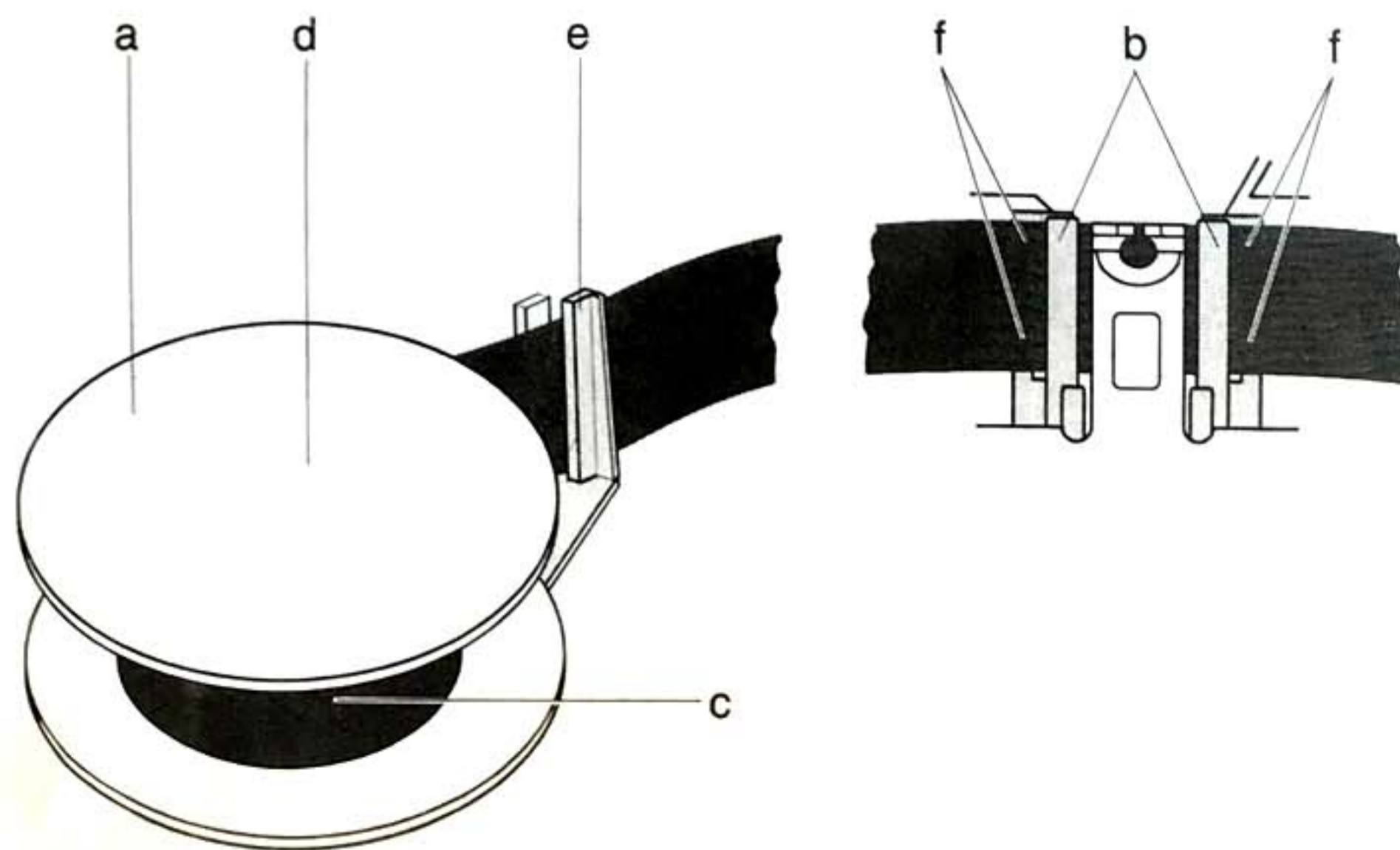
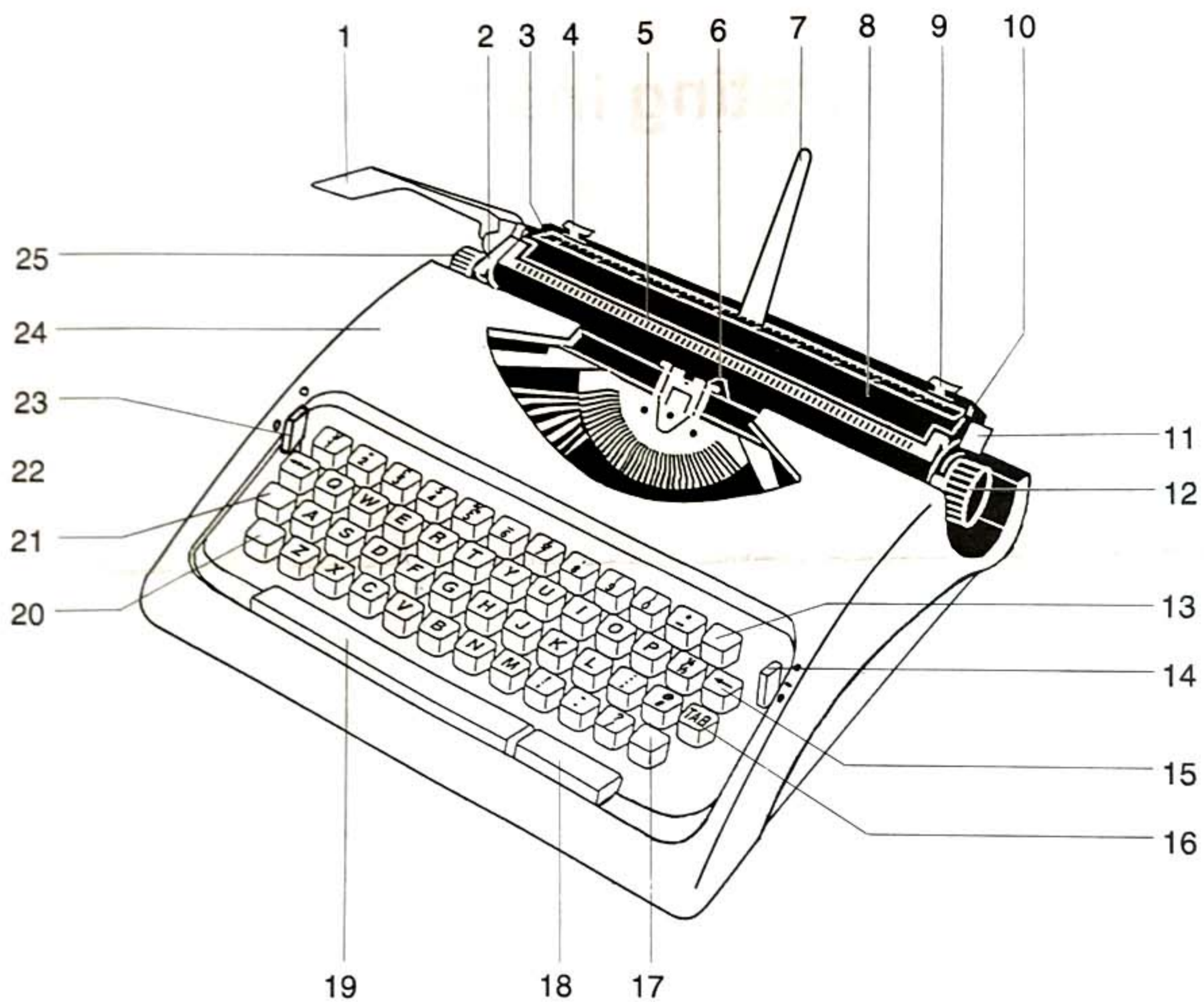
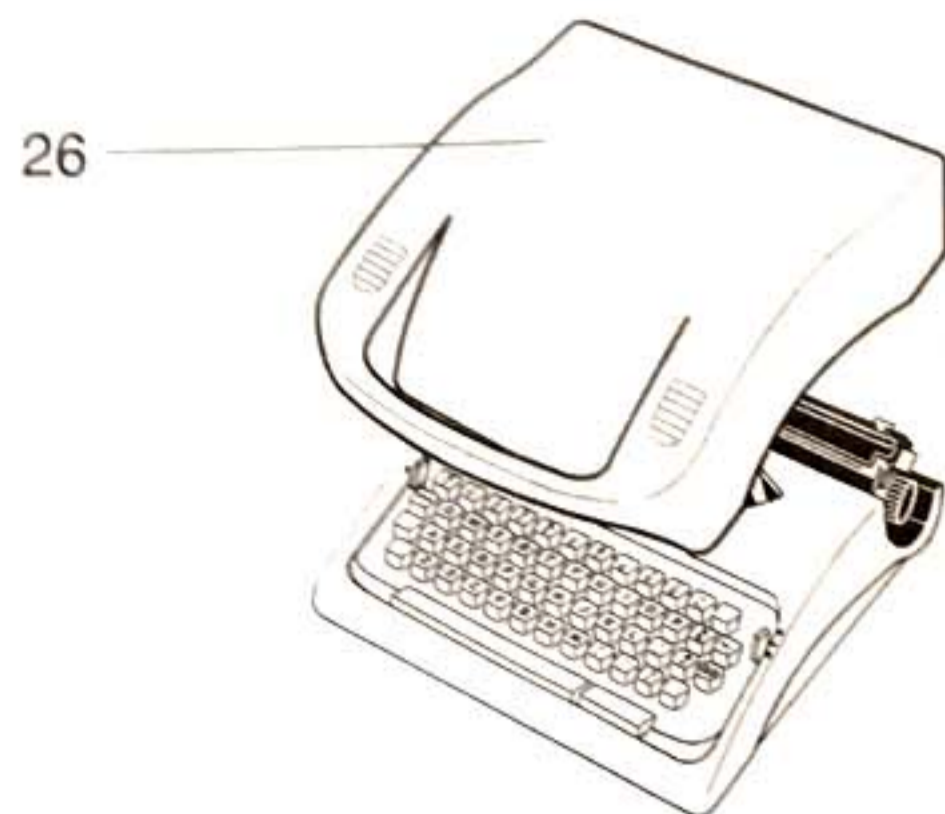
1



2



Operating instructions



- 1 Line space lever
- 2 Line space control, platen release, and Carriage lock
- 3 Margin scale
- 4 Left-hand margin stop
- 5 Paper retaining bail
- 6 Aligning scale
- 7 Paper support
- 8 Paper deflector
- 9 Right-hand margin release
- 10 Paper release
- 11 Carriage release
- 12 Right-hand platen knob
- 13 Accent key (where fitted)
- 14 Ribbon control
- 15 Backspacer
- 16 Tabulator key
- 17 Right-hand shift key
- 18 Repeat spacebar
- 19 Half-space spacebar
- 20 Left-hand shift key
- 21 Shift lock
- 22 Margin release and typebar disentangler
- 23 Touch adjuster
- 24 Front cover
- 25 Left-hand platen knob
- 26 Machine cover

First -

Take machine out of carrying case. Lift up the line space lever (1) and move carriage lock lever (2) rearwards, thus releasing the carriage. Lift off front cover and remove cardboard from type bar segment. Remove tape band from right-hand platen knob (12) and unhook from left-hand platen knob (4). Remove the four plastic pins (left and right) inserted between the guide rails for protection during transport. Press down one of the shift keys (17/20) and take out both plastic strips (right and left) below the guide rails. When replacing the machine cover make sure that the two securing pins drop into the two rubber-lined holes in the frame. The machine which in itself operates almost silently, should be placed on a soft pad (felt, if possible). The machine is now ready for use.

Ribbon control

With a two-coloured ribbon, set the ribbon control switch (14) for 'black' in the uppermost position or for 'red' in the lower position. The centre position 'white' is for cutting stencils. When the upper half of a single-colour ribbon is worn, reverse the ribbon spools for use of the lower part of the ribbon. Ribbon advance and return are automatic.

Inserting the paper

Operate the lever (7), which will result in the paper support being automatically raised. Insert the paper between the platen and the margin scale and adjust it to the required height by turning the platen knob (12/25). To adjust the paper or to insert several sheets, pull the paper release lever (10) forward.

Setting the margin

The beginning and end of the typing line can be set by adjusting the two margin stops (4/9) at the rear of the carriage. Depress these and slide them to the required position. The two pointers on the margin scale (3) indicate the setting.

Line setting and spacing

Set the space between the lines by means of the line space control (2): rear line 1 for single-spacing, centre line for one and a half spacing, front line 2 for double-spacing. Slight pressure on the line space lever (1) pushes the carriage along to the right and brings the paper into position for typing on the next line.

Shift key

To type capital letters or any of the characters on the upper portion of the key tops depress either one of the two shift keys (17/20). By depressing shift lock (21) the type segment can be retained in this position and released again by depressing either of the two shift keys.

Spacebar

The operation of the spacebar (19) will move the carriage the width of a letter.

Half-space spacebar

Holding down the spacebar (19) and typing a character produces a half space to the right.

Accent key (where fitted)

The accent key (13) is a so-called "dead" key which does not operate the carriage mechanism. Accents must therefore always be depressed before the letter that requires the accent ^ (circumflex) is made up of the ` (acute) and the ` (grave) accents.

Margin release

The ringing of a bell indicates that a few more spaces are available before the end of the line. On reaching the end of the line the carriage will stop. To continue the line beyond the margin stop, or to start typing before the set starting point, depress the margin release (22).

Disentangling the type bars

The margin release (22) also serves to disentangle any the type bars which may have become jammed, if for instance two keys are struck at the same time. By depressing the margin release the type bars will return to their normal position.

Back Spacer

When depressing the back space key (15) the carriage moves back one space i. e. the width of one letter.

Platen release

The line space control (2) also acts as platen release. When set at its rearmost position (.) it is possible to type at any spacing, independently of the line space mechanism, for example when typing printed forms or for subsequent typing on a sheet already removed from the machine.

Carriage release

Grip the right-hand platen knob (12) with your right hand and depress the carriage release lever (11) with your thumb. This allows the carriage to be moved freely in both directions.

Drawing lines

Insert the point of a pencil in the notch of the alignment guide (6). Draw horizontal lines by moving the carriage backwards and forwards with the carriage release (11) depressed, and vertical lines by turning the platen upwards or downwards after operating the platen release (2).

Touch adjuster

First remove the machine cover. By moving the lever of the touch adjuster (23) the tension of the keys may be adjusted to suit the individual touch. The maximum pressure is obtained when the touch adjuster is set to (+). Minimum pressure is obtained when it is set to (-).

Correcting

For correcting incorrectly typed letters or characters we recommend the usual commercial correction fluids.

Tabulating

In order to permit typing in columns, the Traveller C is equipped with stops at each 10 positions. These can be read off on the scale of the paper retaining bail (10, 20, 30 etc). The operation of the tab key (16) will move the carriage to the selected stops.

Entering space sequences

Hold the repeat spacebar (18) down until the carriage has reached the desired writing position.

Changing the ribbon

Remove front cover from machine to expose the ribbon mechanism. Wind the worn ribbon on to one of the two spools (a). Pull out spool control arm (b) and remove empty spool. Free the end of the ribbon from the hook and remove it from the ribbon carrier (f). Now replace the spool carrying the old ribbon by a new one, securing the free end of the new ribbon onto the hook of the empty spool and press the hook into the spool centre (c). Insert the empty spool, taking care that the pick-up pin of the transport wheel engages in one of the pick-up holes (d). Place the ribbon behind the left and right ribbon reversing arm (e). Depress shift lock (21). Take ribbon in both hands and insert it behind the ribbon prongs (g) of ribbon vibrator holding lugs, as shown in illustration. When using a bichrome ribbon make sure that the red part of the ribbon is to the bottom.

Protection against damage

When carrying the machine, or to prevent unauthorised or rough handling, lock the carriage by pulling forward the carriage lock lever (2). Unlock the carriage by moving the carriage lock lever to the rear.

Push the line space lever downward to close the plastic carrying case, place the rear of the machine over the lip of the case and snap shut.

Cleaning

Clean the types from time to time with a type-cleaning brush and a proprietary-type cleaning fluid. See your dealer for any necessary repairs. He has the experience and training to give your typewriter the proper service.