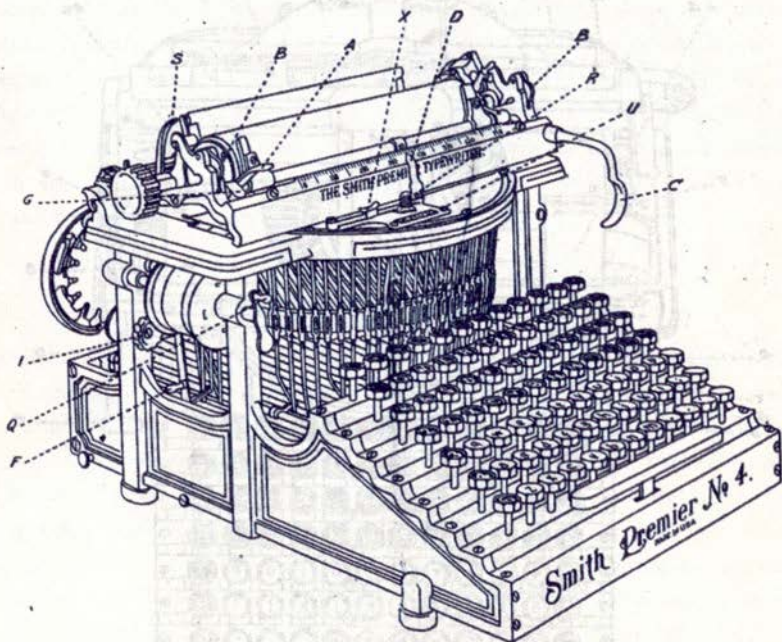


INSTRUCTIONS FOR USING
THE SMITH PREMIER
TRI-CHROME MACHINE

THIS FOLDER COVERS INSTRUCTIONS FOR THE TRI-CHROME RIBBON MECHANISM ONLY.

The instruction book accompanying this folder contains instructions for operating all other parts of the machine, and you should refer to this folder only for information in reference to the Ribbon Mechanism, including Stenciling (or mimeographing), Cleaning the Type, and Reversing the Movement of the Ribbon.

By the right or left side of the machine we mean your right or left side as you face it.

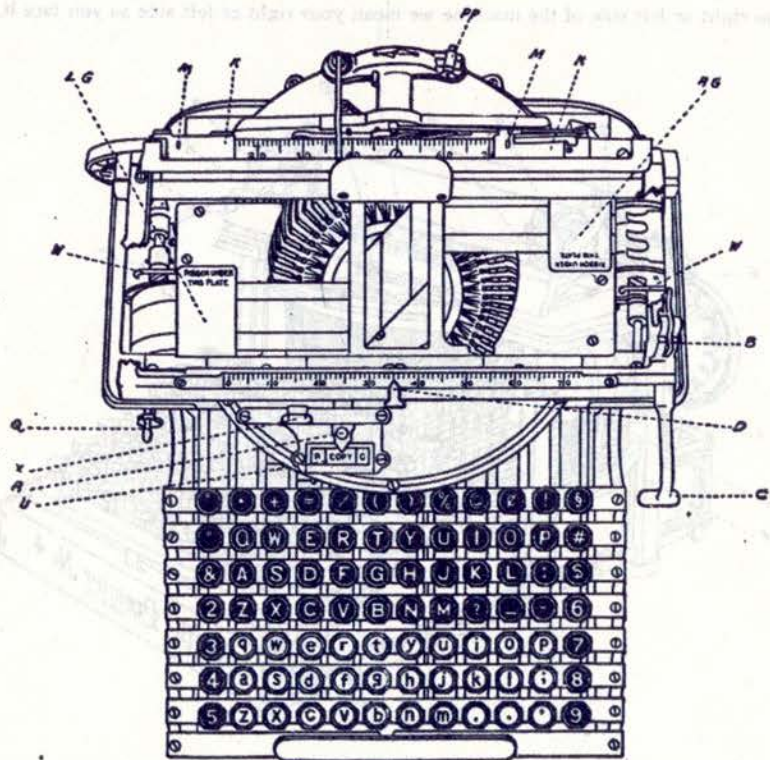


TRI-CHROME MACHINE.

Ribbons with one, two or three colors are used on this machine. You will understand the method of arranging and fastening the ribbon by noting the exact manner in which the ribbon is arranged and fastened on the machine when you receive it.

TO CHANGE RIBBON.

Remove the platen and pull lever (F) on the left side of machine toward the front. With crank (Q) reel ribbon all on to the left ribbon spool, watching the right ribbon spool to see when the end of ribbon is reached. This done, the center or drum of spool will be exposed, showing the ribbon clamp which fastens the ribbon to the spool. Release the ribbon by pulling the clamp forward and pin the new ribbon to the end of the old one (matching the colors).



Draw the ribbon out from under the guard plates (L G and R G) so that the pin which you have used to fasten together the ribbons will not catch in the guard plates. Before starting to wind the ribbon on to the left spool see that lever (F) is pulled forward.

Dog (W) on the right spool should be held up by the finger of the right hand when winding

the ribbon. Reel the new ribbon through until it reaches the left spool. Unpin the ribbon, then draw the old ribbon from the spool, being careful to hold the spool to prevent it from overrunning and thus tangling or catching the ribbon. Clamp the end of the new ribbon on to this left spool and by means of crank (Q) reel it through until the other end nearly reaches the right spool. Fasten this latter loose end of the new ribbon on to the right spool by means of the ribbon clamp. Place the ribbon under the guard plates and it will take care of itself.

SHIFTING THE RIBBON

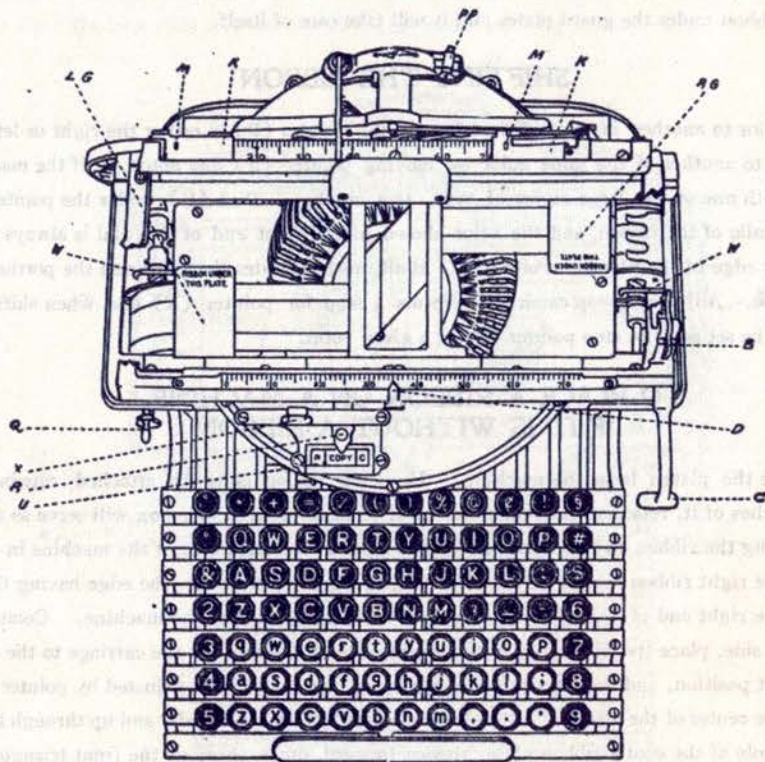
from one color to another, is accomplished by moving pointer (R) to either the right or left; from one portion to another of the same color by moving pointer (R) one notch, or if the machine is equipped with one of the large styles of type, two notches. Dial (U), under the pointer, is an exact fac-simile of the ribbon, and the color shown in the right end of this dial is always the one on the front edge of the ribbon. Pointer (R) at all times indicates the color and the portion of the ribbon in use. Adjustable stop catch (X) forms a stop for pointer (R) and when shifting the ribbon, can be set so as to stop pointer (R) at a given point.

TO PLACE A RIBBON ON A MACHINE, IF IT IS WITHOUT A RIBBON.

Remove the platen from the machine. If a new ribbon is to be attached, unwind about eighteen inches of it, retaining the remainder as it is in its box, which box will serve as a holder when winding the ribbon on the machine. Set this box at the right side of the machine in a direct line with the right ribbon spool. If the ribbon has more than one color, the edge having the color shown in the right end of dial (U) is to be placed toward the front of the machine. Commencing at the right side, place the ribbon under the guard plate (R G) moving the carriage to the right to a convenient position, and see that the center ribbon plate, which is adjusted by pointer (R), is placed at the center of the machine. Pass the end of the ribbon down under and up through the back triangular hole of the center ribbon plate, thence forward, down through the front triangular hole of the center ribbon plate, thence to the left of the machine under the guard plate (L G) through the hole in the top plate directly above the left ribbon spool, down over the spool, attaching the end of the ribbon to the left spool by means of the ribbon clamp. This done, having drawn lever (F) to the front, and with the right hand keeping dog (W) on the right of the machine lifted so that it will not engage the worm gear on the spool shaft, with the left hand, by means of crank (Q), reel the ribbon on to the left spool until the right end of the ribbon reaches the right edge of

the machine. Push back lever (F) and slip the ribbon to the right through the hole in the top plate immediately above the right ribbon spool, under the spool, and attach it to the spool by means of the ribbon clamp. Replace the platen and the machine will be ready for use.

If at any time before the ribbon is put on, or when putting it on, lever (F) becomes fast, it is because one or the other of dogs (W) has engaged the worm gear, in which case release the dog.



When winding a ribbon on to either spool and the opposite spool has no ribbon on it, it is always necessary to hold up dog (W) on the empty spool during the operation.

When following either set of instructions for attaching a ribbon it will doubtless be found necessary for convenience to shift the carriage to various points by depressing the carriage release lever (G) at the forward left corner of the carriage. It also may be found convenient to shift the center ribbon plate by means of pointer (F).

FOR STENCILING.

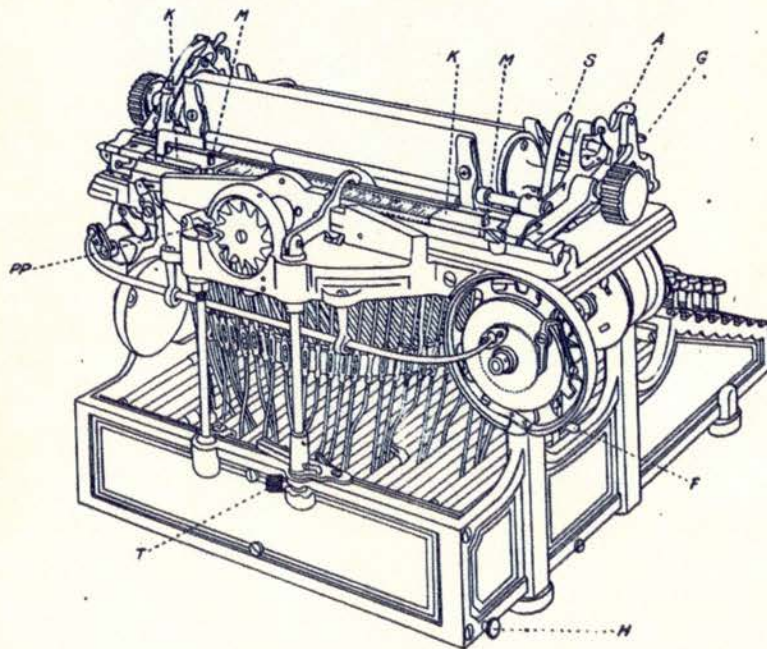
Press down and move (X) and (R) to the left as far as they will go. In this position the type will not come in contact with the ribbon.

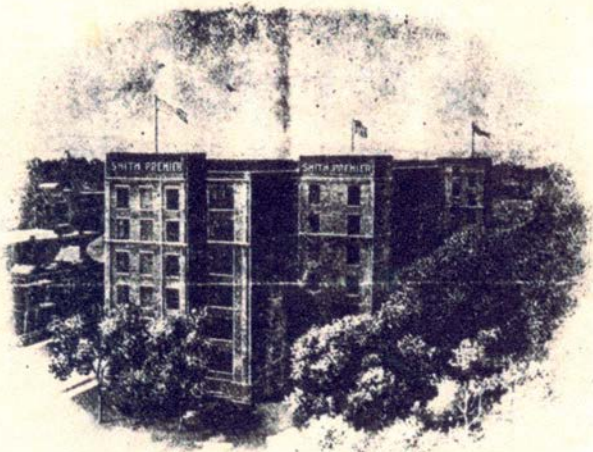
FOR REVERSING THE MOVEMENT OF THE RIBBON.

At any time the movement of the ribbon may be reversed and the ribbon made to travel in the opposite direction by pulling forward or pushing backward lever (F) at the lower left side of the machine.

FOR CLEANING TYPE.

Remove the platen from the machine; press down and move (X) and (R) to the left as far as they will go. For details of type cleaning instructions consult accompanying book.





THE SMITH PREMIER TYPEWRITER CO.
SYRACUSE, N. Y.